

## DUO HYDRO AIR PELLET BOILER

MANUFACTURED BY:

**MCZ**

The DUO pellet boiler comes with HYDRO AIR technology which allows the pellet boiler to heat both the room in which it is installed, via forced ventilation, as well as the water for the hydronic system.

The MCZ Biomass range is an excellent low carbon and hydronic hot water solution.

Biomass in general offers a cost effective, off grid solution versus electric and LPG.



**HUNT**  
HEATING

**12 MONTH\*  
WARRANTY**



### COLOUR

102 White, 105 Bordeaux, 107 Black

### MEASUREMENTS

1223mm (H) x 582mm (W) x 622mm (D)

### ACCESSORIES

**WOOD PELLETS** 15 - 1 X 15kg Bag of wood pellets (Provided free of charge with purchase of pellet boiler for commissioning).

### CONTROL PANEL



### PELLET BOX



**HUNT HEATING**  
The smart choice.

### SHOWROOM

11 Fiveways Boulevard  
Keysborough  
VIC 3173

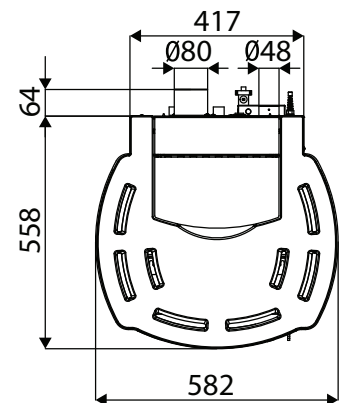
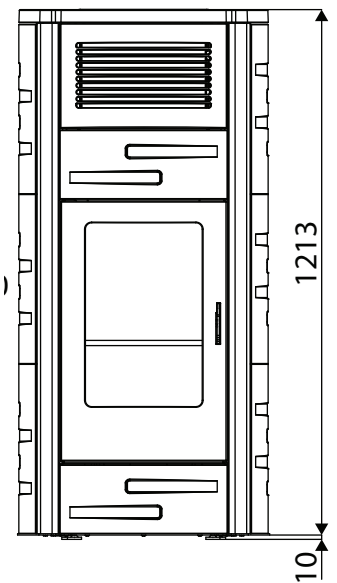
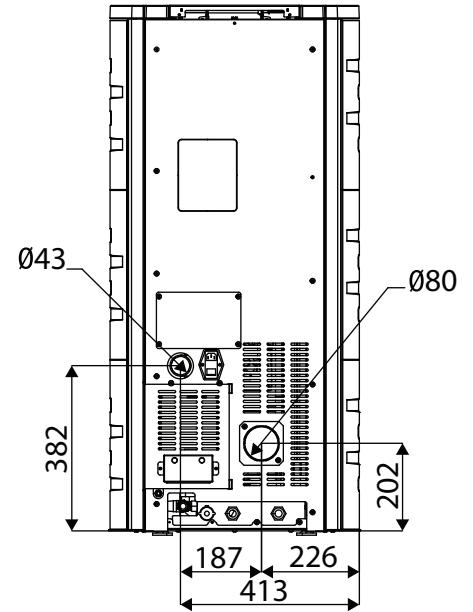
**PHONE** 1300 00 1800

**FAX** (+613) 9798 5133

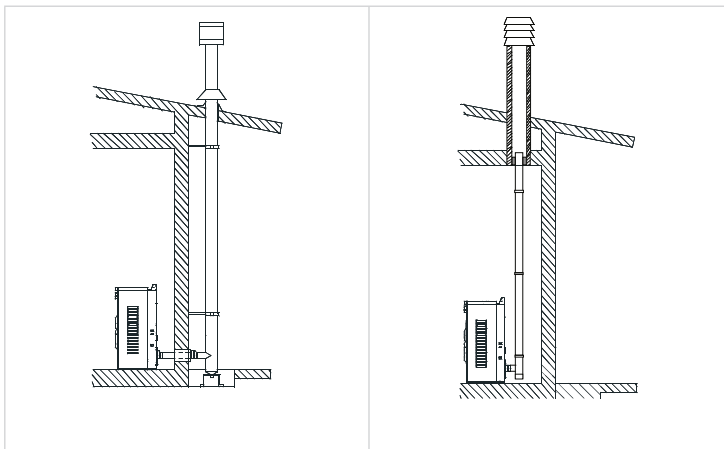
[enquiries@huntheat.com.au](mailto:enquiries@huntheat.com.au)

[www.huntheat.com.au](http://www.huntheat.com.au)

<b>POWER<sub>max</sub></b>	Maximum Power	tot 22.3 - 1.178 (kW-kcal/h) water 18 - 15.480 (kW - kcal/h)
<b>POWER<sub>min</sub></b>	Minimum Power	tot 4.4 - 3.784 (kW-kcal/h) water 3 - 2.580 (kW - kcal/h)
	Nominal efficiency	92.5 (%)
	Pellet tank capacity	Approx. 32 kg
	Pellet diameter	6-8 mm
	Pellets burned	~0.9 / ~4.9 (kg/h)
	Running time with one load	~28 / ~5 (h)
	Flue diameter	80 mm
	Weight	195 kg
	Flue length	min. 4.5 - max. 12.6



### Installations with **VERTICAL** flue setting



130 mm twin wall insulated stainless steel flue recommended and in stock at Hunt Heating.